

# Spectrum IVR

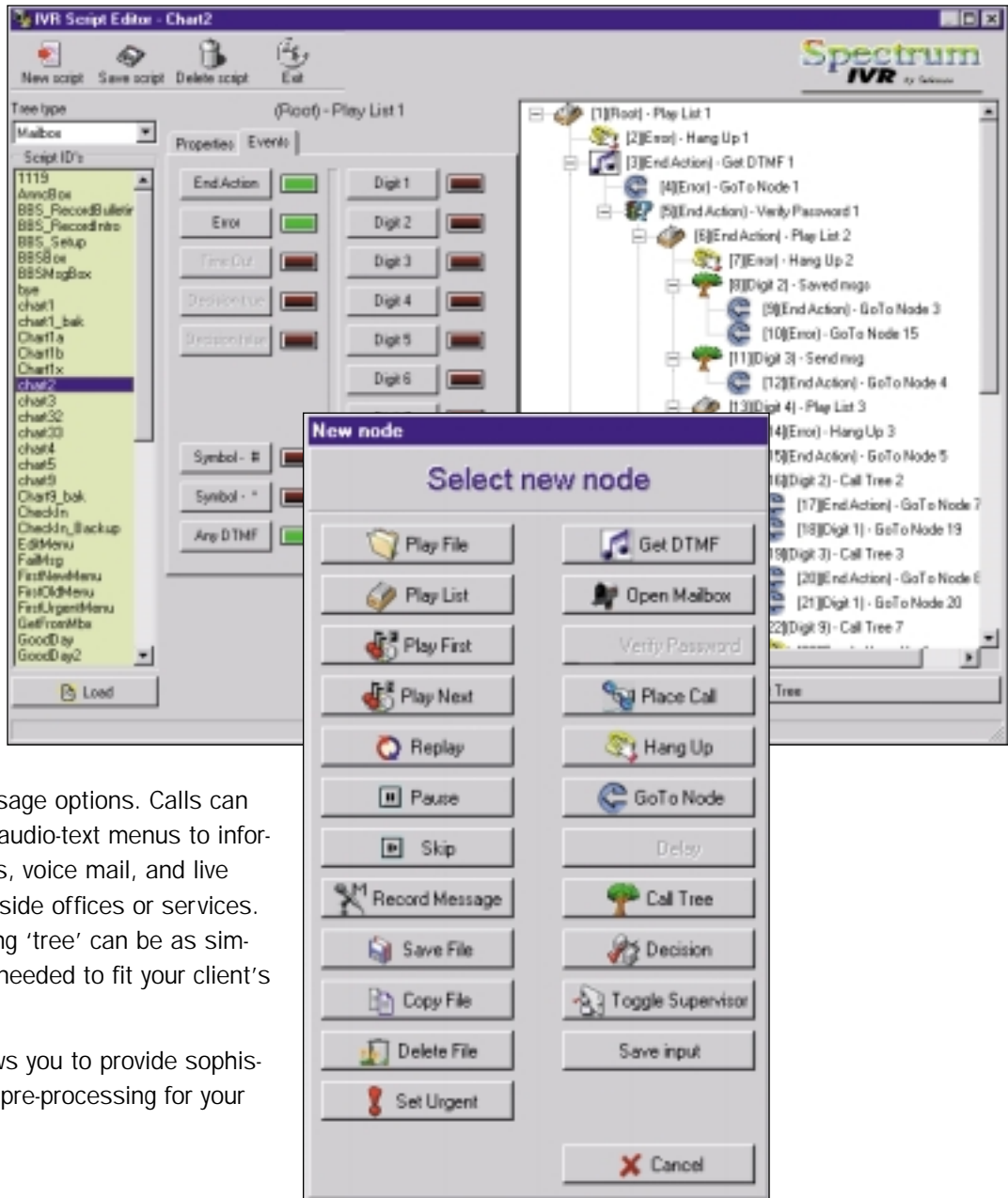
## by Telescan

The Future of Your Business

Spectrum IVR (Interactive Voice Response) is a fully integrated addition to the Spectrum Prism call processing platform that can significantly reduce your operator overhead and at the same time provide the high level of service your clients expect.

Spectrum IVR gives you the ability to process a call and provide a wide range of message options. Calls can be routed through audio-text menus to informational messages, voice mail, and live operators or to outside offices or services. Each call processing 'tree' can be as simple or complex as needed to fit your client's requirements.

Spectrum IVR allows you to provide sophisticated automated pre-processing for your complex accounts



**Spectrum IVR gives you:**

- Full integration with Prism and Spectrum VMail
- Flexible call processing
- Visual setup and programming
- Standalone or Pre-Screen options
- Sophisticated client call processing services