

# Spectrum Data Manager

by Telescan

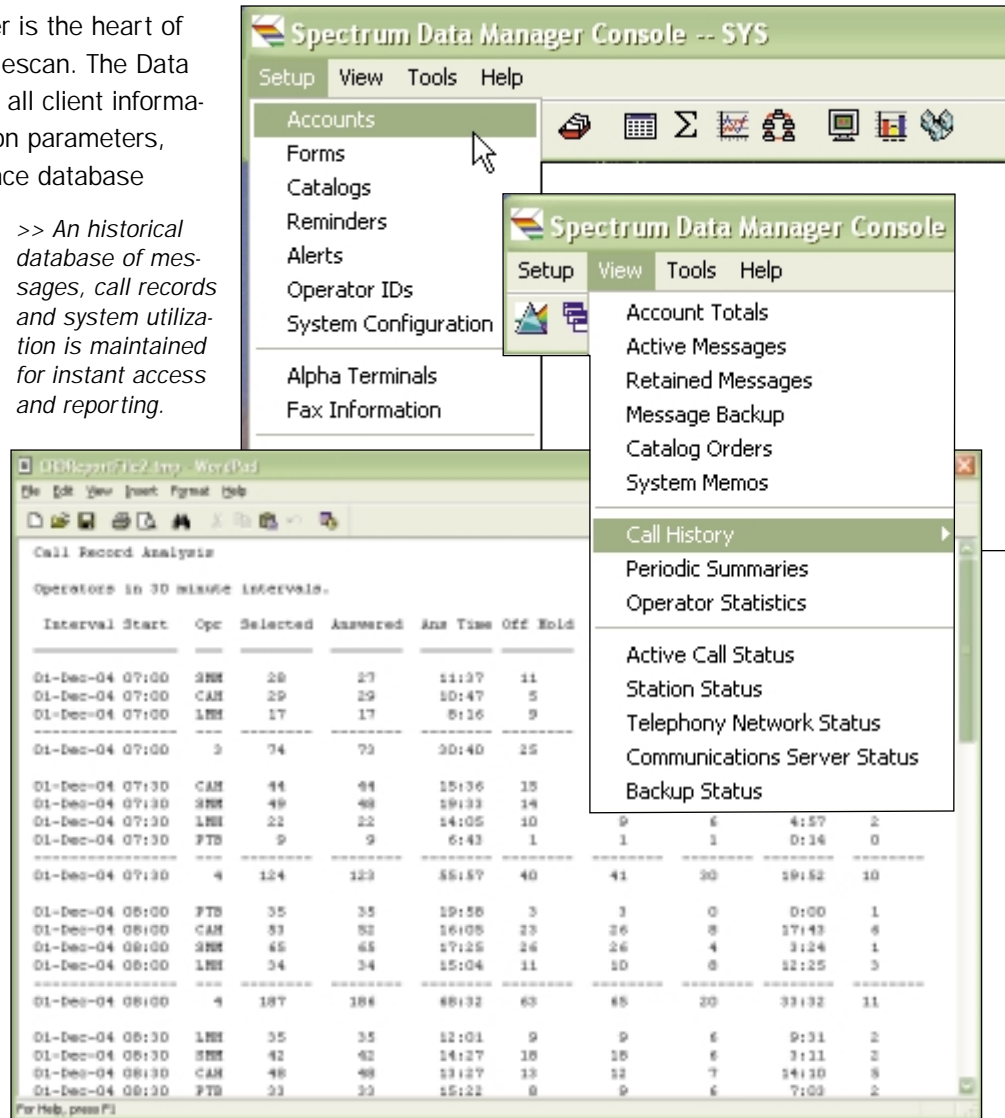
The Future of Your Business

The Spectrum Data Manager is the heart of the Spectrum System by Telescan. The Data Manager controls access to all client information and system configuration parameters, combining a high performance database server with a full range of networking and reporting capabilities.

Spectrum Data Manager interacts with Spectrum Prism to validate and route incoming calls. As an agent takes a call, the Data Manager provides the Spectrum Agent Workstation with all the client information required to process the call. As messages and orders are taken and dispatched, they are automatically faxed, e-mailed or alpha paged to your clients via Spectrum Communications Server.

> Numerous statistical reports are available to analyze system utilization and operator productivity.

>> An historical database of messages, call records and system utilization is maintained for instant access and reporting.



**Spectrum Data Manager gives you:**

**Reliability**

- Standards-based hardware and software
- TCP/IP networking
- Automated backups
- Mirrored hard drives\*
- Hot-swappable power supplies\*

\* Real-time redundancy for critical system elements

**Capacity**

- Grow to over a hundred operators
- Hundreds of call paths
- A million active messages
- Unlimited archiving

**Features**

- Automated messaging and dispatch
- Time-zone support per account
- Remote agents
- Integrated Order Entry
- Optional On-Call scheduling
- Optional Instant Messaging
- Highly flexible operator capabilities